



AP Drawing Portfolio

Martha Venezia Naadat

2022



Image 1

Sustained Investigation

Height: 18 inches

Width: 14 inches

Material(s): Crayons and Candles are used to create a realistic feel, adds authenticity that accommodates warmth.

Process(es): Crayon to drips down from the canvas, and excess wax is scraped into the circle.



Image 2

Sustained Investigation

Height: 18 inches

Width: 14 inches

Material(s): Crayons and Candles are used to create a realistic feel, adds authenticity that accommodates warmth.

Process(es): Using scale to display more details, I zoom in into the specifics of the candle.



Image 3

Sustained Investigation

Height: N/A

Width: N/A

Material(s): Starting off with digital art, I launch into the project with mild experimentation.

Process(es): Viewing a set of candles, I explore a candle and its burning progression.

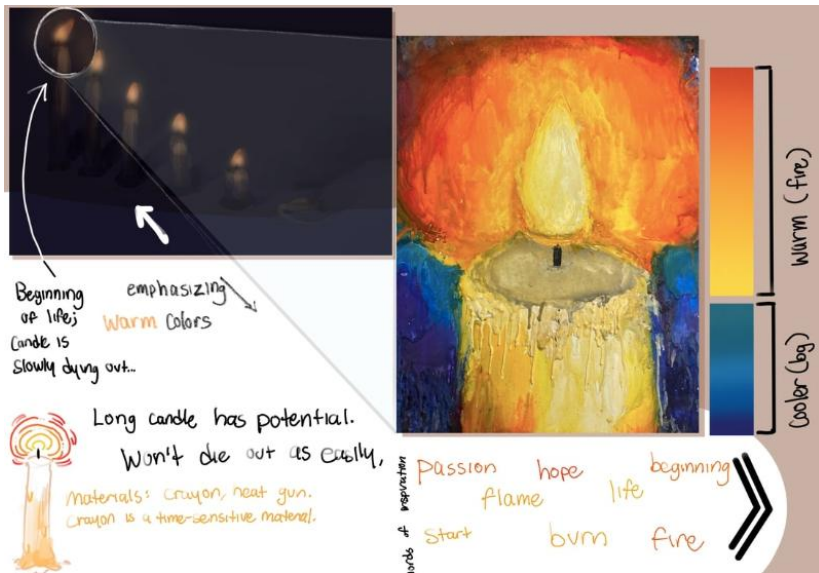


Image 4

Sustained Investigation

Height: N/A

Width: N/A

Material(s): Photoshop to edit together, camera to take photos.

Process(es): Reviewing the contrast between both pieces reveal the inner works of each piece.

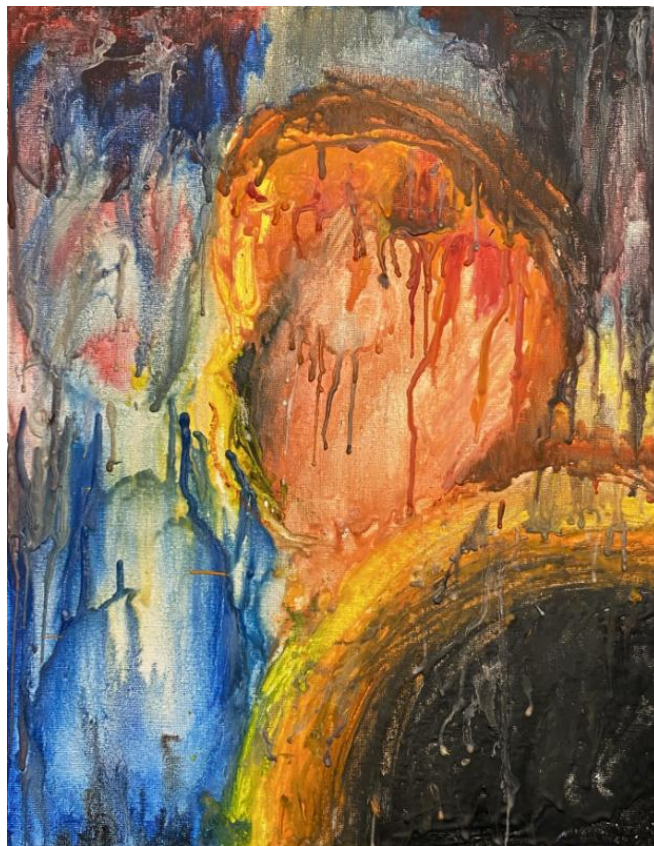


Image 5

Sustained Investigation

Height: 18 inches

Width: 14 inches

Material(s): Melted crayon mixed with melted candles.

Process(es): Splattering the melted crayon around the canvas creates a messy environment, one that is cluttered.



Image 6

Sustained Investigation

Height: 14 inches

Width: 18 inches

Material(s): Melted crayon mixed with melted candles.

Process(es): Portrait created from wax crayons displays the threshold between life and death.



Image 7

Sustained Investigation

Height: 12 inches

Width: 16 inches

Material(s): Melted crayon mixed with melted candles.

Process(es): Messy crayon coloring embodies the child-like structure of childrens art.



Image 8

Sustained Investigation

Height: 18 inches

Width: 14 inches

Material(s): Melted crayon mixed with melted candles.

Process(es): Messy crayon coloring embodies the child-like structure of childrens art.



Image 9

Sustained Investigation

Height: 18 inches

Width: 14 inches

Material(s): Melted crayon mixed with melted candles.

Process(es): Bright, messy crayons display the messiness of a child's attitude and behavior.



Image 10

Sustained Investigation

Height: 16 inches

Width: 12 inches

Material(s): Sand and Wax are both time-sensitive materials, and both can create temporary works.

Process(es): Leaving the inside of the hourglass empty can investigate a glassy effect, fitting the glass theme.



Image 11

Sustained Investigation

Height: 14 inches

Width: 18 inches

Material(s): Melted crayon mixed with melted candles.

Process(es): The dull colors juxtaposes the previous bright palette in this experiment of color.



Image 12

Sustained Investigation

Height: 10 inches

Width: 10 inches

Material(s): Melted crayon mixed with melted candles.

Process(es): The empty background represents new possibilities as the warm road travels on.



Image 13

Sustained Investigation

Height: 10 inches

Width: 10 inches

Material(s): Melted crayon mixed with melted candles.

Process(es): The present is full of events, which the purple displays a persons life as the road turns solid.



Image 14

Sustained Investigation

Height: 10 inches

Width: 10 inches

Material(s): Melted crayon mixed with melted candles.

Process(es): The beginning of life starts off with the tick of a clock, the melting path only beginning to form.



Image 15

Sustained Investigation

Height: N/A

Width: N/A

Material(s): Melted crayon mixed with melted candles.

Process(es): Three paintings merged into one show the journey of a person who is unsure where they are headed.

Written Evidence

Sustained Investigation

1. Identify the question(s) or inquiry that guided your sustained investigation.
2. Describe how your sustained investigation shows evidence of practice, experimentation, and revision guided by your question(s) or inquiry.

Response 1:

The question I identify in my inquiry is "how do candles parallel various stages in life?? Light and heat all emanate different meanings, all depending on one's interpretation. Heat, coming from a candle, can determine how long a candle lasts: the brighter one shines, the quicker one burns. But if our goal will eventually come to an end, is it worth putting the effort into our daily activities? How do children view the world as compared to an adult? How should we live our life to make the most of it?"

Response 2:

Image 1, 2 represent beginnings, as a clock and candle display the start of something new. Image 3 zooms out into various stages of life through candles. Image 4 reviews the connection between various stages of candles and time sensitivity. Image 5 and 6 delve into deeper waters, questioning one's identity when time runs out. Images 7, 8, 9 look into the mind of a child, specifically, the naivety through bright colors. Images 10, 11 adds the element of growth through how a child's mind develops as they get older. Images 12, 13, 14 walk you through a person's life to create the whole Image 15.



Work 1

Selected Works

Height: 18 inches

Width: 14 inches

Idea(s): Time-sensitivity is a thing to be careful with, make the most of your time while you have it.

Material(s): Crayons and Candles are used to create a realistic feel, adds authenticity that accommodates warmth.

Process(es): Using scale to display more details, I zoom in into the specifics of the candle.



Work 2

Selected Works

Height: 18 inches

Width: 14 inches

Idea(s): Pressure builds up over time, and letting it sit for too long gradually causes one to explode.

Material(s): Crayons and Candles melted together emphasize the melting effect of the volcano.

Process(es): Crayon drips down from the canvas, and excess wax is scraped into the circle to show an overflow.



Work 3

Selected Works

Height: 18 inches

Width: 18 inches

Idea(s): As humans, people should spend their time helping one another, no matter how different they are.

Material(s): A mixture of melted wax and candles emphasize the theme of unity within both people and materials.

Process(es): Contrasting colors explore the differences within people, as no two people have the same experience.



Work 4

Selected Works

Height: 18 inches

Width: 14 inches

Idea(s): Sand represent the limited of time a person has, but yet there are always opportunities to grow.

Material(s): Sand and Wax are both time-sensitive materials, and both can create temporary works.

Process(es): Leaving the inside of the hourglass empty can investigate a glassy effect, fitting the glass theme.



Work 5

Selected Works

Height: 14 inches

Width: 18 inches

Idea(s): Those who pass away look back into their lives upon the final second.

Material(s): Crayon mixed in with candle, which are typically used within funerals in respect for the deceased.

Process(es): Stacking wax on top and sketching out details lay out a scene that shows perspective, looming above.